



PB 1112 PILOT & CREW BOAT



GENERAL

Place of Construction: Colón, Panamá
Hull Material: Aluminium
Type: Pilot & Crew Boat

DIMENSIONS

Length: 10 m
Beam: 3.8 m
Depth: 1.90 m
Cargo: 3.5 Ton

CAPACITY

Fuel: 500gals

PROPULSION

Marine Engine
Gear: 2X360HP @2000RPM
Transmission: 1.47:1 DTMP 5100
Speed: 26 Knots

ELECTRIC SYSTEM

Generator: 5.5 KVA Monofasic 120V 60HZ

NAVIGATION SYSTEM

GPS
Radar
AIS
VHF: 2x ICOM501
Compass: HB-71
Searchlights: 1X Jabsco 146SL 50WATTS 12V

INTERIOR

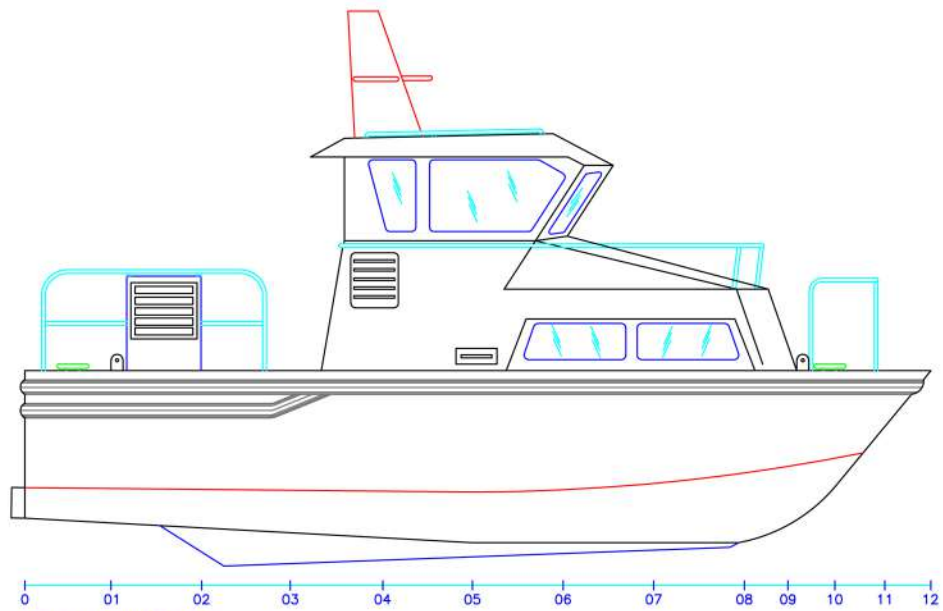
Passengers: 12 Passengers
Bathroom: Optional
AC: 2 x13500 BTU

AUXILIAR EQUIPMENT

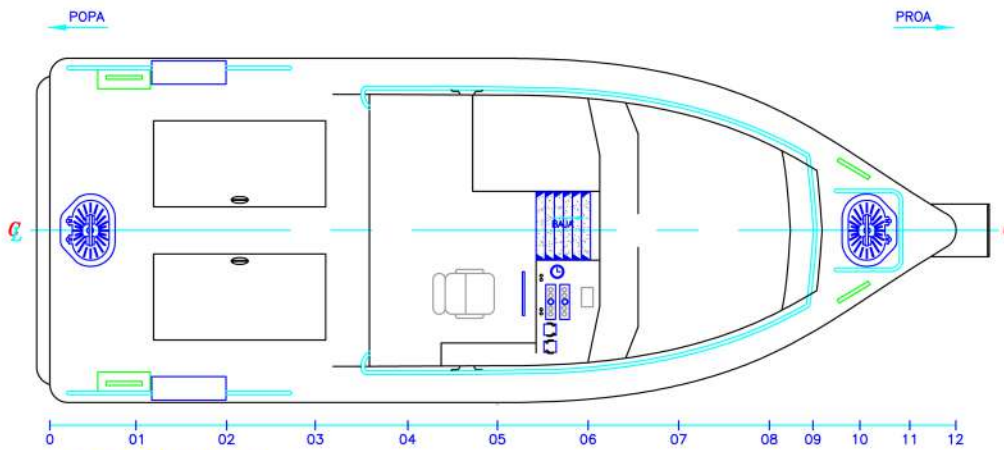
Bilge Pump: 5X 2000 GPH RULE
Anchor: 1 x 24 Kg
Defense System: 125 MM x 125 MM

SAFETY & OTHERS

JimBuoy Float: 1x12 pax
LifeRings: 32 x 24"
LifeJacket: 14
Fire Extinguisher: 4 x Lbs CO2



VISTA EN PERFIL



VISTA EN PLANTA

PB 1112 PILOT & CREW BOAT



PANAMÁ

Calle 50 Edificio F&F Tower
Piso 33, oficina 33B.
Phone: +507 3983017 /3014

COLÓN

Provincia de Colón, 4 Altos.
Phone: +507 4413882

sales@tys-shipbuilding.com